

Aluminium Composite Panels &
Coil-Coated Aluminium Sheets

Transform. Create. Fascinate.

Complete Versatility in Exterior Applications – with Reynobond®, Reynodual®, and Reynolux®.

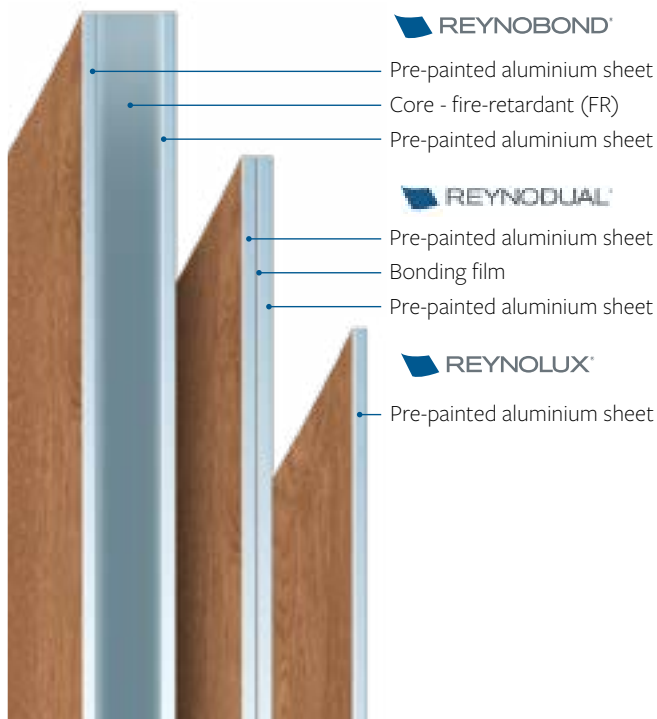
Reynobond® composite panels consist of two coated aluminium sheets that are laminated to both sides of a fire-retardant (FR) core. Flatness, lightweight, minimal expansion, high corrosion and weather resistance are some of the advantages that make it an outstanding product. Please ask for the product datasheet for more information.

Reynodual® panels offer many of the benefits of Reynobond® aluminum composite material (ACM) in a double sheet panel composed of two thick skins of aluminum. Reynodual® combines the flatness and stiffness of ACM with the dent resistance and recyclability of sheet metal. Please ask for the product datasheet for more information.

Reynolux® pre-painted aluminium is manufactured through coil-coating and comes with a large variety of coatings. The benefits of Reynolux® pre-painted aluminium are numerous: in addition to its UV and weather resistance, it is also easy to fabricate and shape. Please ask for the product datasheet for more information.

Versatile and Easy to Fabricate.

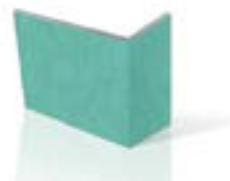
Reynobond®, Reynodual®, and Reynolux® panels and sheets enable flexibility in fabrication allowing freedom in design for unusual shapes.



REYNOBOND®

FABRICATION

- Bending
- Rolling



REYNODUAL®

FABRICATION

- Bending
- Rolling



REYNOLUX®

FABRICATION

- Bending
- Profiling
- Pressing
- Rolling

Advantages:

• Products:

- ✓ Cost-effective: easy and quick installation and maintenance
- ✓ Highly UV and weather resistant
- ✓ Warranty up to 30 years
- ✓ Easy to fabricate and bend: freedom in design for unusual shapes

• Service:

- ✓ In widths up to 62 in and lengths up to 360 in
- ✓ Flexible and short lead times for standard stocking items



Paint Qualities & Technical Coatings

Good resistance to corrosion, UV and weathering, flexibility required for fabrication, and a wide range of colors are some of the advantages offered by our paint qualities. They come with a 20 or 30 year warranty.

- **Colorweld® 500/500XL:**

High-performing, coil-coated finishes that allow color matching at the highest uniformity and quality. They feature 70% Kynar 500®/Hylar 5000® polyvinylidene fluoride (PVDF) resins with fluoropolymer technology, providing excellent flexibility and film adhesion for forming, with superior resistance to humidity, impact, salt spray, pollution and abrasion. Colorweld® 500/500XL paint is specifically developed for outdoor applications such as facades and roofing, both in the area of new buildings as well as refurbishment.

- **Duragloss® DL/PFX:**

A high-tech coating especially developed for architectural applications such as facades and roofs, both in the area of new buildings as well as refurbishment. These 3-coat advanced polymer coatings provide a high resistance to aging, UV and corrosion making them an attractive option for large outdoor applications, which place exceptionally high demands on evenness in colors.

Ask for the paint datasheet for more information.

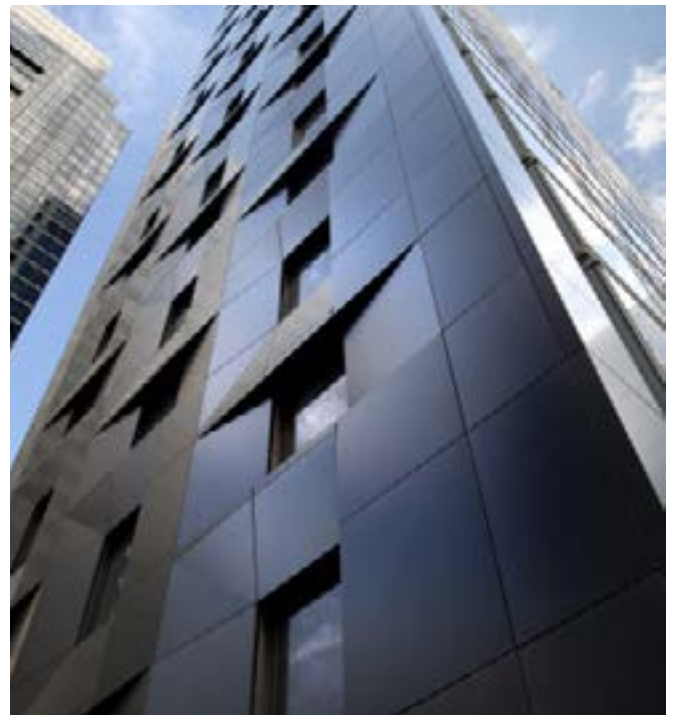
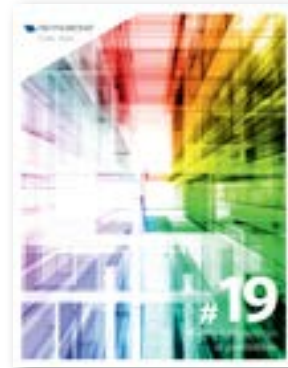


Wide Range of Colors.

You can find all standard finishes in our color chart:

- **Colorweld® 500:** Solid, Mica, Metallic
- **DesignLine™:** Wood, Mineral, Patina, Stone, Concrete
- **PrismFX™:** Color Shifting
- **Colorweld® LF:** Brushed Aluminum
- **Colorweld® Brite:** Brite Mirror
- **Anodized:** Clear

Custom color matching also available.



Technical Data Reynobond®

Products composition		Reynobond® FR	Reynodual®	Reynolux®	
Thickness composite panel		0.157 in 4mm	0.120 in 3mm		
Thickness pre-painted aluminium sheet		0.020 in (± 0.002 in) 0.5 mm (± 0.2 mm)	0.060 in (± 0.002 in) 1.5 mm (± 0.1 mm)	0.040 in (± 0.002 in) 1 mm (± 0.2 mm)	
Alloy & temper		Series 3000	Series 3000	Series 3000	
Core		FR	-	-	
Front side finish		Anti-corrosive treatment plus: COLORWELD® 500/500XL or DURAGLOSS® DL/PFX	Anti-corrosive treatment plus: COLORWELD® 500/500XL or DURAGLOSS® DL/PFX	Anti-corrosive treatment plus: COLORWELD® 500/500XL or DURAGLOSS® DL/PFX	
Reverse side finish		Washcoat - Other on request	Washcoat - Other on request	Washcoat - Other on request	
Products characteristics					
Width		62 in 1575 mm	62 in 1575 mm	62 in 1575 mm	
Length		243 in 6172 mm	243 in 6172 mm	120 in 3084 mm	
Weight		1.58 lb/ft ² 7.7 kg/m ²	1.75 lb/ft ² 8.5 kg/m ²	0.52 lb/ft ² 2.78 kg/m ²	
Tolerance in squareness		<0.118 in < 3 mm	<0.118 in < 3 mm	<0.118 in < 3 mm	
Tolerance in bow		≤ 2 mm/500 mm over lengths and widths	≤ 2 mm/500 mm over lengths and widths	≤ 2 mm/500 mm over lengths and widths	
Products performance					
Tensile strength (R _m)		lb/in ² Mpa	6.3 ksi 43.90 Mpa	20.3 ksi 140 Mpa	-
Flexural Modulus (Core Yield Shear stress)			176 psi 1.21 Mpa	765 psi 5.27 Mpa	-
Stiffness (EI)		lb-in ² /in kN.m ² /m	0.035 lb ² /in ² 0.242 kN.m ² /m	0.024 lb ² /in ² 0.166 kN.m ² /m	-
Thermal expansion			0.0288 in/ft OR 2.4 mm/m for a temperature variation of 100°C (212°F)	0.0288 in/ft OR 2.4 mm/m for a temperature variation of 100°C (212°F)	0.0288 in/ft OR 2.4 mm/m for a temperature variation of 100°C (212°F)
Temperature resistance			-40°F/+180°F -40°C/+80°C	-40°F/+180°F -40°C/+80°C	-
Maximum allowable deflection			L/30	L/90	-
Fire classification					
Flame Spread Index		ASTM E84	<25	<25	-
Smoke Developed Index			<450	<450	-
Self Ignition Temperature		ASTM D1929	824°F 440°C	836°F 447°C	-

Check model building code for acceptable deflection limits.

Our paint datasheets are also available, please ask for the dedicated datasheet.

The technical data refers to currently available products. Please note that the specific characteristics of each project have to be taken into account (country, delivery time, size of transport containers, etc.).

Information contained herein or related hereto is intended only for evaluation by technically skilled persons, with any use thereof to be at their independent discretion and risk. Such information is believed to be reliable, but AAP shall have no responsibility or liability for results obtained or damages resulting from such use. AAP grants no license under, and shall have no responsibility or liability for infringement of, any patent or other proprietary right. Nothing in this document should be construed as a warranty or guarantee by AAP, and the only applicable warranties will be those set forth in AAP acknowledgment or in any printed warranty documents issued by AAP. The foregoing may be waived or modified only in writing by an AAP officer.

Disclaimer

Laws and building and safety codes governing the design and use of AAP's products, and specifically aluminum composite materials, vary widely. It is the responsibility of the owner, the architect, the general contractor, the installer and the fabricator/transformer, consistent with their roles, to determine the appropriate materials for a project in strict conformity to all applicable national, regional and local building codes and regulations. REYNOBOND IS COMBUSTIBLE; IT COULD CATCH FIRE AND BURN. SEE AAP WEBSITE FOR PRODUCT WARNINGS. ANY LABORATORY TESTING INFORMATION PROVIDED BY AAP APPLIES ONLY TO THE PARTICULAR PRODUCT OR ASSEMBLY TESTED AND DOES NOT NECESSARILY REPRESENT HOW PRODUCTS WILL ACTUALLY PERFORM IN USE.



ARCONIC ARCHITECTURAL PRODUCTS, LLC

50 Industrial Boulevard
Eastman, GA 31023
Tel. 1.800.841.7774

samples.literature@arconic.com
www.reynobond.com